

AN AUTOMOTIVE AND CULTURAL CELEBRATION

GO
JAPAN

馬力 #
Brands Hatch

24 SEP '23

BRANDS
HATCH



TIME ATTACK - ROUND 7

MSUK DRIFT PRO

CHAMPIONSHIP - ROUND 7

RACING HONDAS CHAMPIONSHIP - ROUNDS 11 + 12 • JDM LEGENDS DISPLAYS
AND DEMOS CAR CLUB DISPLAYS • COSPLAY CHARACTERS AND WORKSHOP

JAPANESE FOOD AND DRINK • JAPANESE ARTS AND CRAFTS • TRADERS AND PARTS AREA • SHOW AND SHINE

TIME ATTACK

DRIFT PRO
CHAMPIONSHIP



RACING HONDAS
CHAMPIONSHIP



Go
Japan!

OFFICIAL PROGRAMME

FOR CONDITIONS OF ADMISSION SEE INSIDE

BrandsHatch 

KENTAGON RESTAURANT AND BAR

Lunch menu from 12 noon
正午からのランチメニュー



Chicken katsu curry served with rice £9.95
チキンカツカレーご飯添え

Beef Yakisoba £9.95
牛焼きそば

**Japanese prawns with chips, Asian slaw
and sweet chilli sauce** £9.95
日本のエビのチップス、
アジアのコールスロー と甘いチリソース

Sushi salad £9.95
寿司サラダ

Vegetable Yakisoba £9.95
野菜焼きそば

The Kentagon Restaurant is opening from 7am until according to demand.
The Kentagon bar is open from 10am until according to demand.

TIMETABLE

SUN 24 SEPTEMBER 2023



BRANDS HATCH

BrandsHatch 

10.00 - 10.30	MSUK DRIFT PRO CHAMPIONSHIP	FREE PRACTICE	15 MINS
10.30	CAR CLUBS AND SHOW & SHINE JUDGING COMMENCES		
10.35 - 10.50	TIME ATTACK WARM-UP	CLUBMAN/POCKET ROCKET CLASSES	15 MINS
10.55 - 11.10	TIME ATTACK WARM-UP	CLUB CLASSES	15 MINS
11.15 - 11.30	TIME ATTACK WARM-UP	PRO CLASSES	15 MINS
11.35 - 12.10	MSUK DRIFT PRO CHAMPIONSHIP	QUALIFYING	35 MINS
12.15 - 12.30	RACING HONDAS CHAMPIONSHIP	QUALIFYING	15 MINS
12.35 - 12.50	TIME ATTACK PRACTICE	CLUBMAN/POCKET ROCKET CLASSES	15 MINS
12.55 - 13.10	TIME ATTACK PRACTICE	CLUB CLASSES	15 MINS
13.15 - 13.30	TIME ATTACK PRACTICE	PRO CLASSES	15 MINS
13.35 - 13.45	JDM LEGENDS	PARADE	10 MINS
13.50 - 14.25	MSUK DRIFT PRO CHAMPIONSHIP	SEMI FINAL - TOP 16	35 MINS
14.30 - 14.40	NISSAN R33 30TH ANNIVERSARY	PARADE	10 MINS
14.50 - 15.00	RACING HONDAS CHAMPIONSHIP	RACE 1 - ROUND 13	15 MINS
15.10 - 15.25	TIME ATTACK QUALIFYING	CLUBMAN/POCKET ROCKET CLASSES	15 MINS
15.30 - 15.45	TIME ATTACK QUALIFYING	CLUB CLASSES	15 MINS
15.50 - 16.05	TIME ATTACK QUALIFYING	PRO CLASSES	15 MINS
15.45	CAR CLUBS AND SHOW & SHINE AWARDS PRIZEGIVING		
16.10 - 16.35	MSUK DRIFT PRO CHAMPIONSHIP	FINAL - TOP 8	25 MINS
16.45 - 17.00	RACING HONDAS CHAMPIONSHIP	RACE 2 - ROUND 14	15 MINS
17.05 - 17.20	TIME ATTACK FINAL	CLUBMAN/POCKET ROCKET CLASSES	15 MINS
17.25 - 17.40	TIME ATTACK FINAL	CLUB CLASSES	15 MINS
17.45 - 18.00	TIME ATTACK FINAL	PRO CLASSES	15 MINS

Times are subject to conditions and circumstances on the day.

OFFICIALS

Promoter Club Time Attack

Motorsport UK Steward
Thomas Banister

Event Directors
Andy Barnes/Rob Barnes

Senior Clerk of the Course
Darren MacClinton

Clerk of the Course
Alec Short/Stacy Lawday/Daisy Lait (Assistant)

Time Attack/Racing Hondas Championship Coordinator
Simon Slade

Motorsport UK Drift Pro Championship Coordinator
James Lelacheur

Secretary of the Meeting
Mark Baulch

Scrutineers
Mike Mattison/Ian Billett/
Sue Jeffery/Darrell Drinkwater

Championship Stewards
Nigel Drayton/David Walton/
Esmore Jones/Mike Dixon

Club Stewards
Scott Seaward/Ciara Seaward

Timekeeping
TSL Timing; Stewart Burr (Chief)/
Amanda Bird

Medical, Marshals & Rescue
Brands Hatch Circuit/MSVR/
BMMC & other Motorsport UK
recognised clubs

Commentary
Alexey Wood/Suzy Wallace/
Jack Oliphant/Fraser Macaulay

Official Photographers:
Rich Sams/Rob Aitken/Daniel
Bridle

Contact details:
Time Attack Ltd. Kleer House,
Windsor Industrial Estate, New
Road, Sheerness, Kent TN12 1NB

Tel: 01795 581366
Email: info@Timeattack.co.uk
www: www.timeattack.co.uk

All paper used in the programme is FSC® certified (by the Forest Stewardship Council)

OFFICIAL PARTNERS

TIME ATTACK CHAMPIONSHIP



MOTORSPORT UK DRIFT PRO CHAMPIONSHIP



RACING HONDAS CHAMPIONSHIP



SHOW SPONSORS



This meeting is organised by Club Time Attack governed by the General Competition Rules of the Motorsport UK, incorporating the provisions of the International Sporting Code of the FIA, additional Supplementary Regulations and any written instructions the organisers issue for the event.

Motorsport UK Permit Nos:
Championships:
Time Attack Championship: CH2023/S050 (Grade C)
Motorsport UK Drift Pro Championship: CH2023/S009 (Grade B)
Racing Hondas Championship: CH2023/R110 (Grade D)

Event:
Time Attack Club Classes: 131451
Time Attack Pro Classes: 131452
Car Races: 131225
Drift Pro: 131443 (CoE)



I Only Use The Best. I Choose LUCAS OIL.



People are keeping their cars for longer than ever. And they want those older cars to run smoothly and retain their engine power, despite their age. The Lucas Oil range of Additives and Utility Products can solve or help to prevent many common mechanical problems in most vehicles, meaning older cars can run like new – with the power and efficiency needed for the long road ahead.



LUCAS OIL

LucasOil.co.uk | 01248 723 666



Manufacturers and designers of high performance pistons and connecting rods for over 40 years.



TIME ATTACK

DRIFT PRO CHAMPIONSHIP



Wossner UK are proud sponsors of the 2022 Time Attack and Motorsport UK Drift Pro Championships

www.wossnerpistons.co.uk

Go Japan!

ゴージャパンへようこそ
WELCOME!



GO JAPAN! - BRANDS HATCH 2023

We extend a very warm welcome to the fourth edition of Go Japan!, the only show of its kind in Europe. A one-day celebration and showcase of Japanese culture, underpinned by a baseline of automotive content whilst embracing far-eastern lifestyle elements, the event provides an immersive and visitor-participatory experience at one of the nation's favourite race circuits, Brands Hatch.

Organised by the experienced Time Attack events team who run a range of other great shows in association with venue operators MSV, Go Japan! has been created to represent a leading example of motorsport, special interest, hobby and business culture in a family-focussed atmosphere.

Held for the first time in 2020, the event was a success from the word go. It has increased in size and popularity each year since and has now become a major occasion in the automotive, sporting and Japan culture calendars. In comparison to other shows that are aimed at the Japanese car scene, Go Japan! offers a refreshingly different and more authentic experience for all.

Today at Brands Hatch you will experience a range of attractions that provide a true taste of the far east:

- JDM Legends feature display and track parade
- Celebrating the 30th anniversary of the Nissan R33 Skyline, featuring a static display and track parade
- Races from the Racing Hondas Championship
- Cosplay characters, workshop and photo booth
- A huge display of Japanese car clubs
- Japanese car Show and Shine competition
- Japanese food and drink experience, with Japanese Beer and Sake bar in Kentagon restaurant
- Japanese themed attractions

And if that wasn't enough, there a full programme of on track action featuring the always-awesome Time Attack Championship, that sees competitors push their cars to the limit as they attempt to set the fastest lap around the technically demanding Brands Hatch Indy circuit.

There's also the truly spectacular sight of the UK's best Drift cars and drivers doing what they do best when they go head-to-head in round seven of the Motorsport UK Drift Pro Championship! Plus, for the first time at Go Japan! you'll see Japanese car racing at its best, with two races from the new-for-2023 Racing Hondas Championship.

We sincerely hope you enjoy your day with us and will take away lasting memories and inspiring experiences about a country that combines world-leading automotive innovation with a rich and unique cultural heritage.

To ensure you don't miss any of the action, please keep track on the timetable and refer to the venue plan printed in this programme. You can also follow the live timing and find out more by visiting: www.timeattack.co.uk and www.gojapan.co.uk.



BrandsHatch

Brands Hatch Indy Circuit Map

MAP KEY Not all facilities are available at every event

- | | |
|-------------------|------------------------------------|
| Parking | Motorsport Vision Centre |
| Disabled Parking | Pit Garages |
| Toilets | Media Centre |
| Disabled Toilets | Race Control |
| Baby Changing | Directors' Terrace |
| Food & Drink | Brabham Stewart Hospitality Suites |
| First Aid | Megastore Shop |
| Cash Point | Kentagon Restaurant |
| Information | Crowd Medical Centre |
| Footpaths | Scrutineering & Paddock Office |
| Pedestrian Tunnel | Hailwoods Restaurant |
| Vehicle Tunnel | Medical Centre |
| Grandstands | |

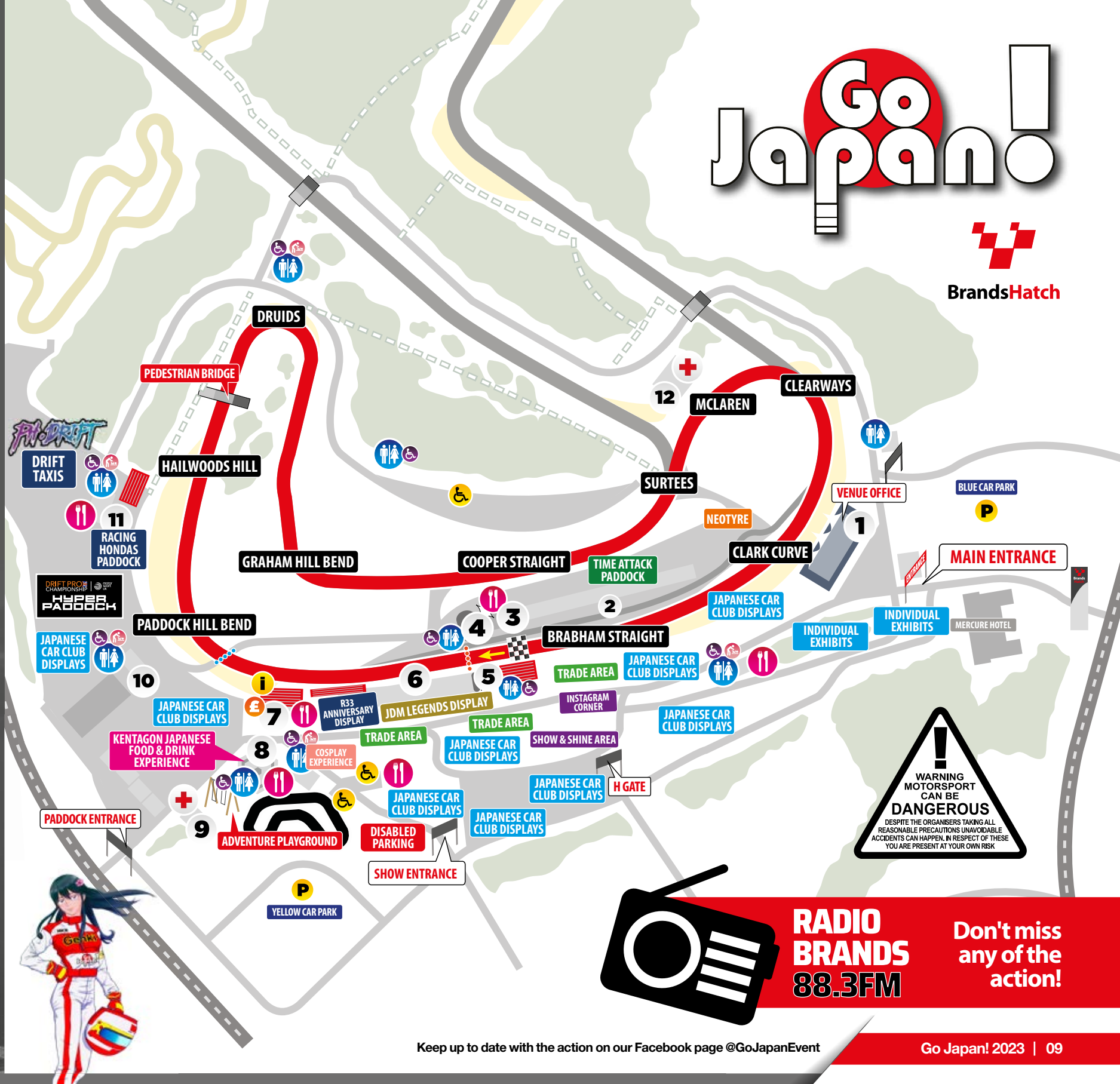
Go Japan!

Automotive Celebration

KEEP UP TO SPEED!

Don't miss any of the action. Watch live on Facebook: @UKTimeAttack or @GoJapanEvent

See who's winning. Watch live timing: www.tsl-timing.com or www.timeattack.co.uk



Go Japan!



Brands Hatch



RADIO BRANDS
88.3FM

Don't miss any of the action!

GOSPLAY

Go Japan!



Cosplay has been a feature of Go Japan since 2021. Such has been its popularity and the way it has been embraced by all those who interacted with the characters, we are delighted to welcome more performers and more opportunities to get involved at this year's show.

Coordinated by Cosplayer lead Alice, this year we are pleased to present Go Japan's official Cosplay group who are there to make the event more colourful and bring this amazing Japan-inspired culture to life. The team is diverse to show that anyone can 'Cosplay' and hopefully, it will inspire others to go to future events in costume.

Joining us this year will be 19 of the UK's leading Cosplayers:

Alice
Amelie
Amy/Ford
Basil
Ed Newsip
Emma
Glacier
Iota
Kai (Kashomon)
Kay
Lily
Nia (SugaryND)
Qween Emi
Ren
Saffire (Owldolly)
Theia
Umi
Ushio
Verity

During the event, our fantastic team of Cosplay characters will be walking around the venue, bringing their stunning and distinctive look to the show. Don't be shy; they'll be only too pleased to talk to you about this fascinating and fun far-eastern pastime and pose for photos and selfies. If you fancy getting involved and finding out more, ask any of the characters or visit the Cosplay marquee located in the trade area at the show where you can take photos.



GOSPLAY

TRADE AREA

Summertime Shiba

Summertime Shiba is a producer of anime and JDM styled kisscuts, slaps, banners and more with a passion for itasha and the JDM scene. All stickers are designed and printed in house which means you won't find Summertime Shiba designs anywhere else!



Tofu Cute

Tofu Cute is a UK-based kawaii shop, specialising in cute and unique plushies, accessories, stationary and a range of other Japanese-inspired goodies. Tofu Cute offers a huge selection of kawaii goods, including special own-brand items and says Kawaii ideology can inject fun and positivity into your everyday life!



Maids of England



Maids Of England will transport you into the fantasy realm of 2.5D!

Currently the longest running maid cafe in the UK. We are a fusion

English and Japanese maid cafe

Maids Of England has been operating since July 2011 with a philosophy that's 60% Japanese, 40% English. While following most Japanese maid cafe customs (such as types of food, sauce art, magic spells and idol entertainment), MOE has unique aspects such as a mix of maids and butlers, as well as ethnic diversity within the staff.

The abbreviation MOE references the Japanese word "moe", connoting a burning desire and passion for a character due to their certain traits. Our maids can play games, take "chekkis" (credit card sized instant photos) as well as singing and dancing live!

MOE will be running a painting stall where you can paint your own mask/fan. Every hour there will be a live by a member of staff. MOE will also be there at the end of the day to cheer on the winners at the awards ceremony.

Come and see us in the Go Japan! Maids Café in the Cosplay Japan experience marquee.



Kitsu's Creations

Kitsu's Creations is a designer and producer of luxury and classic faux fur kemono products and items as well as J-fashion handmade accessories, ita bag charms and resin wearables. It creates classic and simple accessories for everyday and event use while being able to cater for the luxury kemono side with Kitsu's branded OOAK (one of a kind) pieces, accessories and mystery boxes.

Japanese Eating Competition

Can you eat just about anything...and quickly? Well, now's your chance to find out. Visit the Cosplay marquee and get yourself booked in. 10 places available.

MOE will be hosting a Japanese-style eating competition: "MOE MOE TIME ATTACK" Where people will compete against one another to eat as much as they can in a given time. Over 18s only.

JDM LEGENDS

Organisers of Go Japan! are excited to present the show's annual homage to an exclusive collection of JDM Legends, a unique feature that brings together a not-to-be-missed collection of true Japanese Domestic Market heroes from Japan.

Each of the cars on display has its own intriguing backstory and rich patina, as explained in the brief histories that follow. Visit the stand situated in the middle of the show and take a look at these gems from the far east, as we pay tribute to these history-making machines.

NISSAN NISMO GT1 GT-R R35

Owned by motorsport and Nissan enthusiast Shaun Lawless, this very special car was one of only five built for the 2010 and 2011 FIA GT1 World Championships by Nismo in Japan. One was used as a prototype, whilst the other four were sold to private teams that would go on to run the cars as Nissan works supported operations in this high profile and spectacular global championship.

For 2010, this particular example was run by Swiss Team Racing before being handed to East Sussex-based Sumo Power GT for the 2011 season. The year kicked off with the car being driven by two ex-F1 Brazilian drivers: Ricardo Zonta and Enrique Bernoldi, with Zonta initially being replaced by British driver Warren Hughes and then by Dutchman Nicky Catsburg.

Whilst it didn't race in anger again, the car was run in demonstration events and appeared on display in shows in the works Nismo livery, under the management of Nissan's GT partner RJN Motorsport. Shaun then purchased the car and continues to bring it to events and in doing so, keeps the much revered GT1 legend alive.

It appears here today in the same Sumo Power GT livery in which it competed in 2011.



BLITZ NISSAN SKYLINE R34 D1

Built by Blitz Co Ltd in Japan for legendary D1 driver Ken Nomura, this car comes from the same era as the HKS Hiper Genki S15 and was one of the Japanese legend's original iconic builds. The car has been in the UK for a number of years and belongs to tuning shop, Garage-D owned by Julian Smith, who will be driving the car in today's demonstration runs and is a judge for today's round of the Motorsport UK Drift Pro Championship.

Seeing this car and the HKS S15 together is stuff of dreams for Drift aficionados. Check out garage-d.com for further details.



HKS HIPER GENKI NISSAN SILVIA S15 D1

Without doubt, this is one of the most famous drift cars on the planet. Built for the 2004 D1GP season by HKS Co Ltd in Japan, those that know their Drift history will know the significance and importance of this car and how it shaped the course of D1 cars around the world.

Driven by 'Nob' Nobuteru Taniguchi, it ran in D1 events in Japan and the USA before being permanently homed in the UK by HKS Europe. It was sold to Sumo Power in 2011 and driven by Brett Castle for one season in the European Drift Championship as the 'NISMO Competition' car, which hid the true identity of this historically important HKS D1 car.

It has now been returned to its former glory and specification by current owner and UK Time Attack founder Andy Barnes using original parts. Circumstances permitting, multiple Drift Champions Ben Broke-Smith will demonstrate the car in today's Drift demonstration sessions.



TOYOTA AE86 TRUENO INITIAL D

Owned by Joseph Lee, this particular Toyota AE86 Tureno was purchased from the USS Nagoya auction house in Japan last year. The livery has been designed to replicate the iconic 'Panda' Trueno featured in Initial D, a Japanese street racing Manga magazine, with the inscription "Fujiwara Tofu Shop" in Japanese on the sides.

The 20v 4AGE engine fitted to the car on show also replicates that of the car featured in the Initial D magazine that was published in Japan over period of 18 years with over 55 million copies in circulation. Initial D has also been adapted into a series of anime television shows and video animations.



YOU CAN SEE THESE AMAZING MACHINES ON DISPLAY OUTSIDE THE BRABHAM/STEWART SUITES ALONG COLIN CHAPMAN WAY. PLEASE SEE MAP ON PAGES 8-9 FOR LOCATION.

MITSUBISHI EVOLUTION VI TOMMI MÄKINEN EDITION



Unquestionably, the most sought after of all Mitsubishi Evolutions is the Tommi Mäkinen, a limited-edition model based on the sixth version of this iconic rally-inspired saloon. A run of 2500 were built to celebrate Finnish rally driver Tommi Mäkinen's four consecutive World Rally Championship driver's titles, from 1996 to 1999.

Offered in both RS and GSR trim levels, the TME featured a distinctive front bumper, with modifications to the engine and turbo over and above the standard model. It was the only Evo VI variant offered in passion red paint (to match the works rally cars) together with white wheels.

The car on show today is a white example owned by former Mitsubishi UK Ralliart General Manager and Operations Director Paul Brigden. Privately imported from Japan, M6 TME was registered on 1st January 2000 and is one of the first of these models ever built.

FENSPORT TOYOTA CELICA GT4X



Cambridgeshire motorsport and performance specialist Fensport is the UK's most successful tuner of Toyotas in recent times, having worked closely with Toyota GB on a number of projects. The best known of its creations has to be the 7th generation Celica GTX that appears at the show today.

Fitted with a 2.0 litre turbocharged 3S-GTE engine, whilst still road-legal, this car is capable of speeds in excess of 200mph and has achieved a string of successes driven by Fensport owner Adrian Smith. In 2011 it was the Toyota Sprint Series Championship winning car, finished 2nd overall in Ten of the Best and came 4th overall in the Goodwood Festival of Speed hill climb of that year. It has also appeared in rounds of the Time Attack Championship.

BLITZ TOYOTA SUPRA

Japanese performance powerhouse BLITZ created this amazing JZA80 Toyota Supra at the peak of the tuning revolution. It was used as a demonstration vehicle for the company's products, as well as the 'at the time' UK Distributor of BLITZ Racelogic recording high-speed runs in the UK and on Germany's autobahns.

To many people here the car will be a familiar sight, as it's regularly been featured in magazines and was extensively used for the company's marketing campaigns. It's now owned by Ibrah Ulhaq.



DATSUN 240Z



The Datsun 240Z was a milestone in Japanese automotive history by being the first mass produced model to rival the established European sports cars of the day.

The 240Z on display is a 1972 ex-California car. It's been fitted with a later 2.8 engine, triple 45 Webers, a modified head and a ZStory stainless 6-branch race header, which gives it around 225bhp. It stands on Gaz Gold coil-overs and a Stanceworks airlift kit, Hilux brakes, 10.5x15 -32 Atara wheels and 225/50 Toyo tyres. The interior has been fully retrimmed in black with Cobra bucket seats, Takata harnesses and Skillard metal door cards. The paintwork is the original colour but with a modern respray, coupled with carbon fibre arches and spoilers from RetroSpec in the US, plus a louvred bonnet and back screen.

The gearstick is the control column top from an RAF Tornado GR1 fighter and wired into a 1980's vintage "Revenger" soundbox. Its owner Tony Lamb says it isn't the most practical of cars: it's noisy, thirsty, harsh to drive but great fun and makes him smile every time he uses it.

ASIA CUP ASTON MARTIN VANTAGE



Yes, we know. Aston Martin is a British brand. So how could one of its cars be included in a Japanese Legends display? Well, this one's different...

The Aston Martin Asia Cup was the world's first ever Aston Martin one-make series. Started in 2008, it comprised 10 races in the Asia Pacific region, including China, Japan, Malaysia and Singapore.

Featuring a grid of 15 identical Aston Martin Vantage N24s, fitted with 410bhp V8s, the series saw a mix of 30-minute sprint races and longer endurance races, some of which supported the Singapore and Chinese Grand Prix.

This recently imported example is the only remaining Asia Cup Aston Martin Vantage in the world and was the championship's safety car and publicity vehicle. It was initially owned by the championship chairman in Osaka and has been in a private collection in Japan for the past 10 years, only covering 40000 kms from new.

Currently in the hands of Andy Morgan, this is its first ever public appearance in the UK and possibly the last, as it's being sold to an Aston Martin collector straight after the show.

NISSAN SKYLINE HR31 GTS AUTECH



This rare and superbly presented example of a 1988 HR 31 Skyline was designed by Autech, Nissan's Motorsport and customising division. Designed to be the 'run-out' model of the R31, only 200 models were produced.

It was the first car to be fitted with the 2-litre six-cylinder RB20 engine ahead of the R32 GT-R that was released over a year later. Developing 207 hp, the car has a respectable 6.5-second 0-60 time and is capable of 137mph.

This particular HR 31 has been owned for the past 15 years by Nissan specialists Abbey Motorsport in Surrey, who restored the car to the condition you see it in today.

JDM LEGENDS

TOYOTA AE86WORLD TRUENO

Labelled as the World's best AE86 by Fast Car magazine, this unique version of Toyota's much-loved AE86 is a work of automotive art and the imagination of previous owner Phil Jones. It is now in the ownership of Cherrille Lyons, who was presented with the car by her husband Keith in 2021. The styling and stance has been inspired by legendary Track and Drift cars in Japan and features a list of parts too long to include.

Throughout the project, the aim was to design and build a car like no other, with the look of a race car finished to the high standards of a show car. The outcome is one of the most complete and best-finished AE86s in the world that benefits from exceptional attention of detail. The car has since been featured in a range of magazines and online articles.



TOYOTA YARIS GRMN

The Yaris GRMN is directly inspired by Toyota's return to the World Rally Championship and the Yaris WRC car. Standing for "Gazoo Racing tuned by the Meister of Nürburgring", the GRMN has been designed and engineered as an authentic performance hatchback, tuned by specialists drawing on the experience gained by Toyota Gazoo Racing from its extensive participation in endurance racing.

The car features a 1.8 litre supercharged engine delivering 212bhp, with a 0-60 of 6.2 seconds. The Yaris GRMN development team worked with the Toyota Gazoo Racing World Rally Team to create visual and design links, with both cars based on the three-door Yaris body shell. The Yaris GRMN features a number of rally-inspired details, finished with decals in Toyota Gazoo Racing's black, white and red competition colours. Only 400 were made for the European market, with an estimated 80 currently in the UK.

The Yaris GRMN - like the one owned by Jessica Grief on display today - helped to launch the Gazoo Racing road car series in Europe, with the GR Yaris, GR86, GR Supra and GR Sport range following in its footsteps.

HIPPOSLEEK TOYOTA CHASER JZX100

Shown at Tokyo Auto Salon numerous times in the early 2000's, this Toyota Chaser was HippoSleek's body kit demo car and has appeared in many magazine features.

In 2008 it was sold to an on owner in Ireland by Power Vehicles, before it toured Europe as a Drift car for a number of seasons.

In 2015, Julian Smith of Garage-D purchased the car and brought it back to the UK where it underwent thorough nut-and-bolt restoration, using mainly original and period-correct parts.

Check out garage-d.com for further details



NISSAN R32 GT-R SKYLINE - GT ACADEMY

The Nissan R32 debuted in 1989 in a variety of guises. The most powerful and consequently sought after was the 2.5-litre 4WD GT-R that in true Skyline tradition, raised the bar a significant step higher than that of previous models.

Whilst he was competing in Japan, this particular R32 was purchased by Jan Mardenborough, the youngest ever winner of the Sony Playstation Nissan GT Academy competition. Beating 90,000 entrants, Mardenborough was rewarded with a works drive for Nissan and went on to compete in the British GT Championship, Formula 3 European Championship, GP3, Le Mans 24-Hours and World Endurance Championship. Since then, he has raced in Japan, mainly in the Super GT and Super Formula championships. His story from screen to track has proved worthy of Hollywood, with the release of 'Gran Turismo: The Movie' in August 2023.

The R32 on show today was purchased from the GT Academy winner in 2019 by gaming supremo, Time Attack competitor and circuit racer Jimmy Broadbent. The car is currently undergoing an upgrade programme and now features a plethora of HKS parts.



TOYOTA CHASER JZX 100

This bright red Toyota Chaser JZX 100 is the BN Sport demo car that was displayed at the Tokyo Auto Salon in 2004.

Now owned by enthusiast Jordan Harvey, whilst still in its original form the car has been fully restored to its former glory to provide an excellent and rare example of Toyota's mid-size saloon produced between 1996 and 2001. Whilst never officially supplied in the UK, its front-engine, rear-wheel-drive format saw many car imported specifically for Drifting.

JDM LEGENDS

FENSPORT GR YARIS

To meet the WRC's homologation rules, Toyota needed to produce at least 2,500 units of the GR Yaris in a continuous 12-month period. The Gazoo Racing (GR) WRT team, led by four-time WRC champion Tommi Mäkinen was heavily involved in the project to build a car that was capable of being equipped to compete in the WRC but also suitable for daily driving. Such has been its success many more 1000s than the original target figure have been produced.

Its impressive credentials meant the GR Yaris was immensely capable straight out of the box, whilst at the same time opportunities to extract more from its 3-cylinder 270hp engine and four-wheel-drive transmission were there for the taking. The temptation to take the car to the next level and beyond was too great for top Toyota tuners Fensport and in 2021 they developed and built the car you see here today. Whilst the engine and many of the standard components remain, the turbocharger, ECU, suspension, brakes and cooling – and more - have all been upgraded, with the car's presence made even more striking by the fitting of a Pandem Rocket Bunny wide-arch kit.



FENSPORT TOYOTA GT86

The Toyota GT86 was launched in Europe in 2012, together with its stablemate the Subaru BRZ. Its clean looks, excellent handling and rear-wheel-drive configuration made it an instant hit with tuners who set about how to improve its relatively conservative performance figures. The UK's leading Toyota tuners Fensport were quick to get a car into its workshops and, over a period spanning from 2012 to 2020, the company put its car through nine separate stages of development.

The car you see here today is the culmination of its efforts, with the car a very different GT86 from the one that first arrived on the premises. Now making 633 and developing 502ftlbs of torque, the car has been highly modified, it's performance enabling it to scoop a number of outright sprint victories in the hands of Fensport owner Adrian Smith.



MAZDA RX7 R-MAGIC

The first Mazda RX7 to be featured on the JDM Legends stand is a midnight purple FD3S model, owned by Tom Coomber. Imported from Japan in 2005, the car has since been developed and modified to what it is today, designed to pay homage to the RX7s that have achieved multiple success on the track.

Fitted with a rare R-Magic bodykit, the upgrades extend to all areas of the car; from the engine and its hybrid Hitachi twin turbos, through to the suspension, cooling system, intake, exhaust, transmission and interior.



HONDA NSX WEKFEST DEMO CAR

It's hard to believe that this sensational looking supercar was originally manufactured in 1990. Owned by Jegan Jeganathan, the car has featured as the demo car for the Wekfest, a series of shows featuring top car builders held in the USA and Japan.

A Sorcery GT aero kit and a series of specially made one-off carbon parts are what gives this NSX its unique and stunning looks, features that have seen it win 'Best Car' award at Wekfest Japan, as well as the Gravity and Japan Performance shows in the UK in 2023.



COCKPIT WAKO NISSAN R33 SKYLINE

With this year's Go Japan! celebrating 30 years of the Nissan R33, we are excited to present one of the best looking and tastefully modified road-going examples there is of this much revered '90s Japanese supercar.

Featured in a number of magazines and online articles, the Cockpit Wako R33 is a no-expense spared take on the cars that formed part of Nissan's racing heritage of the era. Currently owned by Kevin Busbridge, this unique creation is fitted with a 2.8-litre RB26 six-cylinder engine that has been tuned to develop in excess of 700hp, helped by a series of HKS and NISMO components.



WATCH THESE AUTOMOTIVE ICONS TAKE TO THE TRACK IN OUR JDM LEGENDS PARADE, STARTING FROM 13:35!

Each year at Go Japan! we aim to celebrate, commemorate and acknowledge a significant moment in Japanese car culture and the country's automotive history.

At the 2020 show we commemorated the 20th anniversary of the Honda NSX; in 2021, with the Honda Civic entering its 50th year of manufacturer and its UK production in Swindon coming to a close, we celebrated the achievements of this most British of Japanese cars.

Then, in 2022, we celebrated in impressive style, when we welcomed over 200 examples of two Japanese motor industry icons: the motorsport-inspired Mitsubishi Evolution and Subaru Impreza. Both were launched in 1992 and went on to revolutionise the sport of rallying and confirmed Japan as the world's leading producer of high-performance production cars.



Now, in 2023 we are set to mark another 30th anniversary of an automotive icon from Japan: the Nissan R33 Skyline. Initially going on sale in August 1993 as a non-GT-R model utilising the RB26 twin-turbo in-line six-cylinder engine, it was a further 15-months later the now legendary GT-R version with its uprated power output and four-wheel-drive transmission was released.

Its impressive tech-spec and performance figures enabled the car to record a string of motorsport successes and earn its now legendary 'Godzilla'

designation. These achievements saw the R33 featured in the first ever instalment of Gran Turismo, its starring role catapulting the Skyline name to global cult status.

To help us celebrate this significant occasion, we have invited 30 Nissan R33 owners to come and join us at this year's Go Japan and help us celebrate this legend of the Japanese motor industry by putting their car on display in the centre of the show and taking part with an on-track parade around the famous Brands Hatch circuit.



TIME ATTACK

2023 TIME ATTACK CHAMPIONSHIP

**PREPARE
TO BE
AMAZED!**

The UK Time Attack Championship continues to be one of the most popular forms of motorsport in Britain – and is the only one of its kind in the world.

This weekend at Brands Hatch hosts the seventh and penultimate round in a year that represents the Time Attack Championship's 18th consecutive season.

This year's calendar features eight rounds spread across six separate race weekends at five different tracks.

As you will see from the entry lists, competitors are split into three sessions and then further split into classes to make things competitive, as follows:

Session 1

- Classic & Retro:** Cars that are 25 years or older
- Clubman:** Road & track day cars
- Pocket Rocket:** Smaller engines cars & hot hatches

Session 2

- Club Sport:** For lightweight track-inspired cars
- Club Challenge:** Two/Four-wheel-drive modified cars

Session 3

- Club Pro:** Highly tuned cars running on treaded tyres
- Classic & Retro Pro:** Cars that are 25 years or older on slicks
- Prototype:** For sports specials and one-offs on slicks
- Pro:** For highly modified cars running on slicks
- Pro-Extreme:** Cars with unlimited modifications

The Clubman Class features cars that are almost standard, with just a mild amount of modification, whilst Pocket Rocket allows cars with smaller engines – such as hot hatches – an arena in which to compete.

Club Class cars feature off the shelf tuning mods, but are restricted to the level of changes that can be carried out. They are also required to run on road-based tyres. This rule also applies to the Club Pro Class for dry conditions – although they can run racing wets when it rains - whilst the Pro and Pro-Extreme Classes are able to run on slicks and super-soft tyres. This dramatically enhances the level of grip and consequently, teams are able to increase the power



output of their engines, which means that some of the cars competing today will be developing in excess of 1000 horsepower!

Each round features four sessions of 15-minutes: Warm-up, Practice, Qualifying and the Final. Results are calculated from the times set in the Final session, with points scored towards championship positions based on the results from Qualifying (half-points) and the Final.

Not scoring points, but adding to the mix, are the competitors who make a one-off appearance during the year, or choose to compete in selected events. This offer to teams and drivers has brought with it some great cars and impressive performances and provides yet another exciting element to the eclectic diversity that is Time Attack.

You can find a full list of this weekend's entries and a full timetable of when the action takes place elsewhere in this programme. And, if you like what you see and want to get involved, then visit www.timeattack.co.uk to find out more. So what are you waiting for?



TIME ATTACK

a MOTORSPORT REVOLUTION

Originating on the racetracks of Japan, Time Attack has evolved to become one of the most significant and engaging motorsport phenomena of our time. It has captivated audiences and inspired an entire generation of enthusiasts from around the globe, who will do whatever it takes to achieve the fastest lap of the day.

It defines the art of focused car modification by providing aftermarket tuners – both amateur and professional - with a platform on which to prove themselves in the most convincing way possible. It embraces the complete spectrum of tuning levels - from a road-based trackday car to a full-blown, mega-horsepower monster – and rewards drivers who achieve ultimate success in each of the categories and classes.

The art of registering the quickest lap-time on a circuit using a production-based car, with no power or upgrade

limitations, is a true test of man and machine versus the clock. It's about running a car to its absolute limit and beyond; on the knife-edge of engine power, traction and response; on the limits of handling, chassis set-up and down force, whilst maintaining reliability and, above all, speed.

Introduced in 2006, the UK Time Attack Championship has grown into the largest and most professional series of its kind in the world. It attracts drivers and teams from all corners of the UK as well as overseas, with an eclectic mix of cars that many of the 1000s of spectators and on-line supporters who follow the championship can readily relate to.

In 2010 it was formally recognised by the Motor Sports Association (MSA), the UK's governing body for motorsport, as an official form of motorsport, with specific rules and formats published in the official regulations.

Multiple classes are employed to give relevance and purpose to a wide variety of cars and drivers: from entry-level street classes to professional higher performance classes.

Time Attack operates at the UK's leading racing circuits, with official timing supplied by TSL to race industry standard, to ensure legitimacy and credibility of the times achieved by competing teams. The championship operates a calendar running between April and September each year to provide a variety of track layouts with National reach and localised audiences across the UK. Time Attack operates a full Championship status points system for each round and class, providing an annual accumulation of points, not only to recognise the quickest cars at each round, but to crown

Time Attack has evolved to become one of the most significant and engaging motorsport phenomena of our time.

the Class Champions at the end of the year.

To ensure the successful and relevant entry of cars and teams, the classing system has evolved into specific categories that are suitable to accept differing levels of car, potential lap-times, modifications and drive-line.

The system encourages vehicles from 'street spec' to purpose-built world class racing machines. Throughout the season lap-times are monitored and where necessary adjustments are made to ensure fair competition in all classes is maintained; the quicker the car, the further up the classing field it goes.

For more information and to find out how to enter Time Attack, visit: www.timeattack.co.uk

WELCOME TO THE MOTORSPORT REVOLUTION. WELCOME TO TIME ATTACK.



OFFICIAL SPONSOR OF **TIME ATTACK**

BC RACING

SUSPENSION SYSTEMS



BR SERIES

FULLY ADJUSTABLE FAST ROAD

- Pillowball upper mount
- Camber adjustable top mounts
- Aluminium top plates
- 30 way adjustable damping
- Adjustable spring platform
- Height adjustment via bottom mount to retain full damper travel
- Bearing mounted upper front spring platform
- Dust boot to protect damper seals
- Monotube damper design
- Full customisation process available

* SOME FEATURES ARE DEPENDENT ON MODEL



**DEFAULT BR SERIES
FROM £999**

+ FREE WORLDWIDE SHIPPING

**OVER 1,000
APPLICATIONS
AVAILABLE**

Klarna. available.

Pay in 3 instalments, Pay in 30 days
or 0% Finance options available
18+ T&C's Apply, Credit subject to status

ORDER NOW 01274 683633 • BCRACING.CO.UK

TRADE ENQUIRIES WELCOME

ROUND 7 ENTRY LIST

TIME ATTACK

NO.	DRIVER NAME	TEAM NAME	CAR	SRE	CLASS
53	Phil Ackerley	ZEROMotorsport	BMW 328i	—	Classic & Retro
69	Eden Young	Haltech	Nissan Micra K11	—	Classic & Retro
113	Aaron Teager	—	Mazda MX5	SRE	Classic & Retro
115	Tom Moon	Agri-vation Racing	Subaru Impreza	SRE	Classic & Retro
173	David Sperry	—	Nissan Skyline GTST	SRE	Classic & Retro
204	Andy Gray	FURY Autoworx	Nissan 200SX	—	Classic & Retro
223	Matthew Urch	Urchfab	Ford 100E	SRE	Classic & Retro
540	Tom Edgecome	540 Motorsport	Mazda MX5	—	Classic & Retro
60	Clive Hopwell	MMT Performance	VW Scirocco	—	Clubman
76	Paul Newman	JFA	Toyota Yaris GR	SRE	Clubman
130	Mark Blackburn	—	Renault Clio 197	—	Clubman
277	Peter Osborne	Red Devil	Vauxhall Astra VXR	SRE	Clubman
383	Jonathan James	Avor Racing	Subaru Impreza	—	Clubman
949	Manny Bull	Fat Boy Racing	Peugeot 206	—	Clubman
32	Mervyn Beckett	MJ Auto Styling	Honda Civic EP3	—	Pocket Rocket NA
97	James Allen	—	Honda Civic Type-R	SRE	Pocket Rocket NA
106	Will Bonfield	KDN/Yody	Ford Fiesta	—	Pocket Rocket NA
158	Adam Watt	Evolution Autoworks	Honda Integra	SRE	Pocket Rocket NA
168	Tom Jewell	A.TT Racing	Honda CRX	SRE	Pocket Rocket NA
182	Michael Hume	CR Engineering	Renault Clio 182	—	Pocket Rocket NA
207	Josh Beardsley	Lost Loyalty	Honda Civic Type R	SRE	Pocket Rocket NA
413	Marc Roberts	JPR Racing	Renault Clio 172	—	Pocket Rocket NA
123	Connor Craven	Tegiwa Racing	Mini Coupe S	—	Pocket Rocket FI
227	Connor Alldritt	Lohen	Mini GP2	—	Pocket Rocket FI
241	Jamie Biss	Scuderia Anchor Hill	Mazda MX5	—	Pocket Rocket FI
331	Nathan Gibson	NG Motorsport	Ford Fiesta ST	—	Pocket Rocket FI
401	Rafail Tsartsaris	Arifix Racing	Mini Cooper S	—	Pocket Rocket FI
997	David Ward	Team F.U.N.	Mini R56	—	Pocket Rocket FI
245	Josh Barrett	Barrett Racing	Caterham 620R	—	Club Sport
515	Tim Morrison	—	Zenos E10R	SRE	Club Sport
555	Phil Archer	First Time Racing	MNR Vortex	—	Club Sport
64	Jonny Fletcher	Direnza	Vauxhall Astra GSi	—	Club 2WD
105	Ronnie Amis	Greenlight Insurance	Ford Focus	SRE	Club 2WD
119	Mike Taylor	Custom Production	Renault Clio	—	Club 2WD
244	Aaron Reeve	AReeve Performance	BMW M2	—	Club 2WD
136	Eliot Dunmore	Pitstop86.com	Subaru BRZ	SRE	Club 2WD
344	Christian Holmes	SMC Racing	Renault Clio	—	Club 2WD
400	James Dover	Delano Built Racing	Honda Integra Type-R	SRE	Club 2WD
677	Radu Stan	KeiMako	Mazda MX5	—	Club 2WD
946	Filip Naydenov	Sierra Garage	Ford Sierra Cosworth	SRE	Club 2WD
71	Dean Taylor	Delano Built Racing	Mitsubishi Evo VII	—	Club 4WD
93	Michael Osborne	Osborne Motorsport	Mitsubishi Evo VI	—	Club 4WD
177	Kestis Dobrovolski	Dream LTeam Racing	Nissan GT-R R35	SRE	Club 4WD
222	Richard O'Connell	Garage 24	Mitsubishi Evo VI	SRE	Club 4WD
671	Craig Cotton	—	Mitsubishi Evo VI	—	Club 4WD
998	Andy Grady	GR Performance	Mitsubishi Evo IX	—	Club 4WD
73	Ben Robinson	Yum Yum Racing / Turbo Technics	Noble M12	—	Club Pro
333	Roman Grendel	Motor City Performance	VW Scirocco TCR	—	Club Pro
430	Ilya Krylov	Haltech	Renault Clio	—	Club Pro
450	Tom Walpole	Corten-Miller Motorsport	Ariel Atom	—	Club Pro
33	Luke Sedzikowski	Tegiwa Racing	Honda NSX	—	Pro
66	Alfie Threlfall	Threlfall Racing	Ariel Atom	—	Pro
87	Jimmy Broadbent	Team87	Praga R1	—	Prototype
117	Olly Allen	ORA Motor Services / DCY Europe	Mitsubishi Evo VII	SRE	Pro
127	Bradley John	Riverside.co.uk / Norris Designs	Mitsubishi Evo IX	SRE	Pro
114	Simon Graves	Team Broadspeed	Ford Escort Mk1	SRE	Classic & Retro Pro
2	Andy Forrest	AFP	Westfield V8	SRE	Pro Extreme
9	Simon Norris	Norris Designs	Mitsubishi Evo IX	—	Pro Extreme

SRE = Single Round Entry (not eligible to score championship points)

Keep up to date with the action on our Facebook page: @UKTimeAttack



IF YOU THINK YOU KNOW DRIFTING, THINK AGAIN...

Following the launch of this brand-new championship last year, we are delighted to present Round 7 of the awe-inspiring Motorsport UK Drift Pro Championship – the highest status Drift competition this country has ever seen.

CHAMPIONSHIP STANDINGS AFTER ROUND 6 TOP 15

POS.	NO.	DRIVER	RD1	RD2	RD3	RD4	RD5	RD6	TOTAL
1	128	LWI EDWARDS	20	50	20	50	40	50	230
2	61	MARTIN RICHARDS	40	40	50	20	0	30	180
3	55	OLIVER EVANS	20	1	20	30	50	40	161
4	86	DAVE BASTIN	25	20	40	20	30	10	145
5	41	IAN PHILIPS	50	20	25	20	20	0	135
6	93	JOSH KING	10	30	10	25	20	25	120
7	94	PAUL CUNNINGTON	30	25	10	1	0	20	86
8	20	RYAN HUGHES	0	0	30	20	25	10	85
9	285	AXEL HILDEBRAND	1	1	20	40	0	20	82
10	420	HARRY LOVE	20	10	10	10	20	10	80
11	112	NATHAN CHIVERS	10	10	10	10	20	10	70
12	26	HAYDN CRUICKSHANK	20	10	10	10	10	10	70
13	147	RICHIE GILBEY	10	20	1	5	10	20	66
14	66	ANDY FROST	10	10	10	10	10	10	60
15	39	PAUL BEECHEY	10	10	5	10	10	10	55

Following the launch of this brand-new championship last year, we are delighted to present Round 7 of the awe-inspiring Motorsport UK Drift Pro Championship – the highest status Drift competition this country has ever seen.

For those of you who are fans of this truly spectacular form of motorsport, we'll sure you'll enjoy the non-stop action and dynamic format that comes with this initiative that heralds a fresh new era for the sport.

Before 2021, a fully accredited and officially acknowledged Drifting competition had never been held in the UK. But in a move that defines the top-tier of the sport in Britain and sets out a road map for its future, an innovative collaboration between Motorsport UK (the sport's governing body) and the Time Attack Organisation inspired the development and creation of the Motorsport UK Drift Pro Championship.

Indeed, the Time Attack organising team are no strangers to the professional side of the sport, having introduced D1 into the UK in 2005 and subsequently the European Drift Championship. Running until 2012, it broke new ground and organisers are confident that the introduction of the Motorsport UK Drift Pro Championship will step things up to an even higher level.

2023 DRIFT PRO CHAMPIONSHIP CALENDAR

ROUNDS 1+2:	30 APRIL/1 MAY - CADWELL PARK
ROUNDS 3+4:	10/11 JUNE - BRANDS HATCH
ROUND 5:	22 JULY - OULTON PARK
ROUND 6:	20 AUGUST - DONINGTON PARK
ROUND 7:	24 SEPTEMBER - BRANDS HATCH
ROUND 8:	22 OCTOBER - SNETTERTON



»» WATCH THE ACTION!

The Drift competition this weekend sees cars leave the start on the downhill section from Druids Hairpin. Having negotiated Graham Hill Bend, drivers initiate as they accelerate along Cooper Straight and then launch their cars into Surtees at speeds that defy the laws of physics. Switching angles, they then have to hold the Drift through McLaren, Clearways and then Clarke Curve before crossing the finish line at the start of Brabham Straight.

Whilst you can see most of the Brands Indy Circuit from the vantage points around the track, the best places to watch the action are from the outside of Clearways and Clark Curve and from the Grandstand at the end of the start/finish straight.

Wherever you choose to watch, don't miss what promises to be some of the best Drifting action you've ever seen!



DRIFT PRO CHAMPIONSHIP | motor sport UK
HYPER PADDOCK

To get the ultimate Drift experience, see the cars and meet the stars, head over to the showcase Hyper Paddock in the outer paddock area.

»» HOW THE JUDGING WORKS

Before the competition begins and to ensure they know exactly what the competitors are up against, all of the judges will drift-drive the course. Consequently, drivers and fans can have absolute confidence that the decisions made and the scores applied will be based on real-life experience and first-hand knowledge.

During the tandem battle portion of the competition, the judges will independently determine a winner by comparing the lead runs of both drivers, as well as the chase runs of both drivers during each battle.

Qualifying

The judging criteria for qualifying will be a combination of the following:

- Speed
- Angle of drift
- Line (line is designated by clipping points, outside zones and touch & go areas)
- Style



»» TANDEM BATTLES

The judging criteria for tandem competition is:

- Lead driver's line, angle and style
- Chase driver's ability to mirror the lead driver's line, angle, speed and style
- Chase driver's proximity to the lead driver

The judges will look for which driver performs better in the tandem battle in both run 1 and run 2, comparing both lead runs to each other another and both chase runs to each other to determine which driver won in each position.

Scores will be calculated from a maximum total of 100 points, as follows:

- Line: 40 pts
- Angle: 30 pts
- Style: 20 pts
- Speed: 10pts

Line scores will be based on a driver's ability to adhere to the line stipulated by the Judges during the driver's briefings. Points will be allocated for outside zones and inner clips, but may also be allocated to zones. Points will be deducted as follows:

- One wheel off the track: 2 points deducted for each offence.
- Two wheels off the track: 5 points deducted for each offence.
- Three wheels off the track: 10 points deducted for the first offence. If repeated during the same run, zero Line points will be awarded for that run
- Four wheel off the track: Zero points
- Further deductions will be made for missing clipping points and partially filling zones.

Angle scores will be judged on a driver's ability to achieve and maintain a high level of angle, as described by the Judges during the driver's briefings. Points will be deducted for the following:

- Lack of angle
- Corrections
- Double-initiation

Style & speed scores will be judged on commitment and fluidity, initiation speed and average speed throughout the run. Points will be deducted for the following:

- Off or partial throttle prior to initiation
- Initiating beyond latest initiation point
- Slowing outside deceleration zones
- Timid approach
- Slow rotations
- Stepped rotations (steering to add small amounts of angle at a time)
- Inaccurate rotations (achieving degree of angle, then adding or subtracting angle)

»» THE JUDGES

Deciding on the outcome of the competition are the Judges. That's why we have invited some of the best in the business to join us for the inaugural season of the Motorsport UK Drift Pro Championship:

»» JULIAN SMITH

A new name to the judging tower for the Motorsport UK Drift Pro Championship, but not a new name in the sport is Julian Smith, owner of Garage-D - one of Europe's best known performance centres for Japanese Street, Drift and Circuit cars.

Julian has been involved with Drifting in the UK from its beginnings in the early 2000's and has done most, if not everything you could imagine involving the sport: from teaching Tiff Needell to drift for the 5th Gear TV programme in 2006, to building the Driftworks Nissan S15 that dominated BDC in 2010.

His most famous of cars is the Blitz Nissan Skyline R34 D1 that can be seen on show here today as part of the JDM Legends display.



»» TYLER KELLY

Tyler is another with a long and successful history in Drifting and like Martin, has been involved with the UK scene for nearly 16 years. However, his path in the sport has been somewhat different, as he started his Drift career 'spotting' for drivers, his skill in being able to convey information earning him a well-deserved reputation.

Working alongside many of the UK's top drivers - including Martin - Tyler's input in providing guidance and advice has helped many to achieve great success at home and overseas. He has also judged other championships in the past, which makes him an ideal candidate to join the Motorsport UK Drift Pro team this weekend.



»» MASAYA YUMEDA

Masaya (Maz) has been involved in UK Drift scene since 2005, when he performed duties as a judge and commentator at major Drift competitions, including providing commentary at D1 exhibition events in both the UK and USA. In more recent times, you may have seen and heard him as the voice of the UK Time Attack Championship.

Masaya has been deeply involved in the Japanese car tuning and aftermarket scene through his involvement with a variety of events and also through his day job at HKS Europe, the UK based subsidiary of the legendary Japanese tuning parts manufacturer where he is Managing Director.



»» COMMENTATOR - FRASER MACAULAY

Fraser Macaulay joins us this year to lead the commentary. With an encyclopedic knowledge of the drifting world, particularly the so-called classic Japanese 'Golden Era' of the early D1 and D1SL days, Option Magazine, Hot Version plus endless obscure JDM only racing game titles. Combining this depth of experience and the modern competition scene makes him one of the best people to lead you and the audiences through what's going on, and why.

Fraser hails from Aberdeen Scotland, and has lived and breathed the drifting and motorsports scene since he could drive. He knows how to arrive in style and has owned a fleet of VIP JDM vehicles because that's just how he does it. Fraser looks forward to screaming at high pitch when it all gets exciting.

»» EVENT FORMAT

Each MSUK Drift Pro Championship event consists of four specific sessions:



PRACTICE

This session provides drivers with an opportunity to familiarise themselves with the circuit and conditions out on track, whilst also ensuring their cars are performing at their best and ready for competition.

QUALIFYING

This is where the field of 21 drivers (if all are running) is whittled down to the Top 16 that progress to the Tandem Battles. Each driver will have two opportunities (two runs) to set a perfect qualifying score. Each judge will score out of 100, take an average and then allocate the score for that run. The points from each driver's best run determines who makes it through to the semi-final.

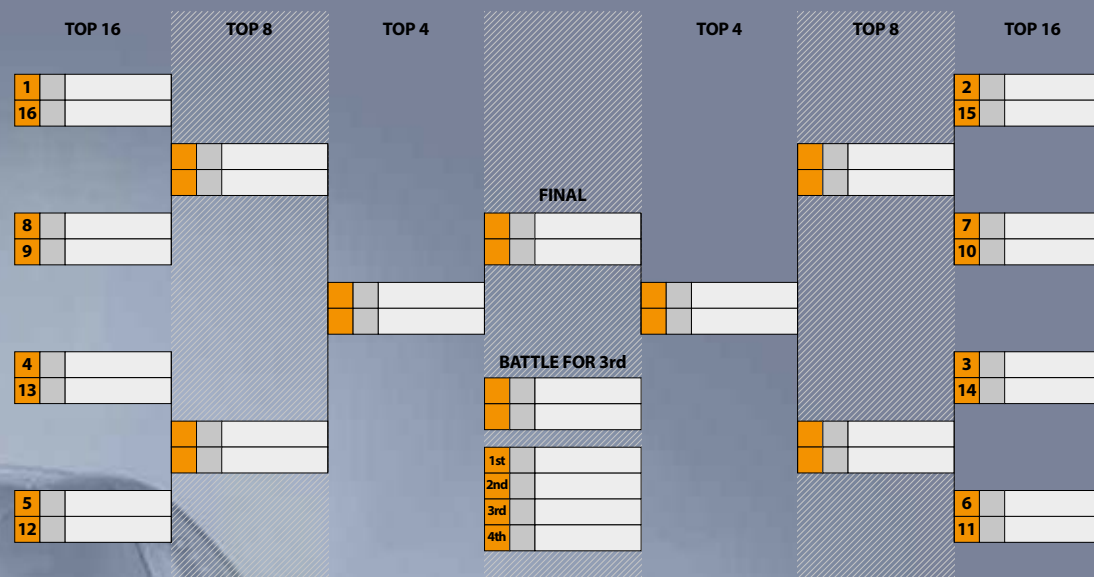
THE TOP 16

This is where the tandem battles start, with each pair battling over two non-consecutive runs. One driver takes the 'lead' on the first run whilst the other driver 'chases' them. These roles are then reversed for the second run, allowing both drivers an opportunity to lead and chase. The judges will determine the winner of each battle after both runs have been completed. Just eight drivers will make it through to the final session.

THE TOP 8

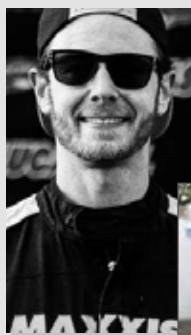
This is where the pressure really mounts up! The Top 8 drivers are once again paired into 'battles' with the winner of each progressing through to a final show down.

The following table shows the structure of the competition and how competitors reach the final shoot out.



18

MATTHEW DENHAM

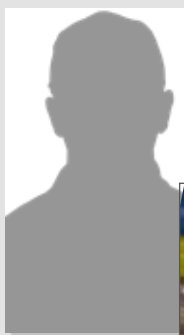


Team: DenhamSpeed
Car: Nissan Silvia S13
Engine: Turbo
Horsepower: 800
Main Sponsor: Japspeed



20

RYAN HUGHES



Team: DY Engine Services
Car: Toyota GT86
Engine: 2JZ
Horsepower: 1070
Main Sponsor: MB Automotive



55

OLIVER EVANS

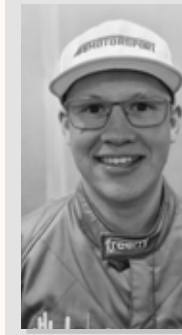


Team: BC Racing
Car: Nissan Silvia S15
Engine: 2JZ GT (Turbo)
Horsepower: 800
Main Sponsor: BC Racing



56

JONATHAN SMITH

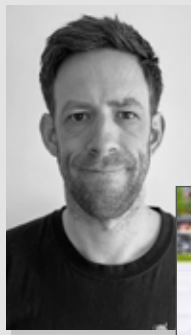


Team: IA Motorsport
Car: Mazda MX5
Engine: LS2 6.7L
Horsepower: 650
Main Sponsor: Novus Finance



22

JOEL CONLAN



Team: JCO Drifting
Car: Nissan Silvia S14a
Engine: 1JZ
Horsepower: 480
Main Sponsor: TBC



26

HAYDN CRUICKSHANK



Team: Colour Sound Experiment
Car: Chaser JZX 100
Engine: LSXR Supercharger
Horsepower: 1007
Main Sponsor: Colour Sound Equipment



61

MARTIN RICHARDS

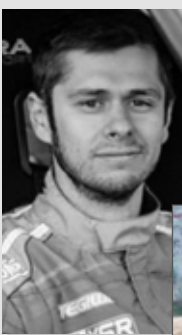


Team: Team Driftworks
Car: Nissan Skyline R32
Engine: 1.5 JZ Turbo
Horsepower: 700
Main Sponsor: Driftworks



66

ANDY FROST



Team: Tegiwa/Coilovers.co.uk
Car: Nissan Silvia S14
Engine: 1JZ
Horsepower: 650
Main Sponsor: Tegiwa/Coilovers.co.uk



39

PAUL BEECHEY



Team: Peacock Performance
Car: Nissan Silvia S15
Engine: Nissan SR22
Horsepower: 500
Main Sponsor: The Vape Distillery, Ellevens, DY Engines, Peacock Performance, JDM



41

IAN PHILLIPS

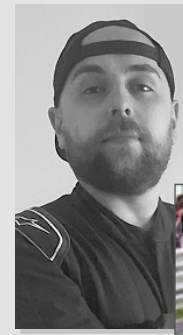


Team: Tegiwa/Alloy Wheel Shop.com
Car: 350Z
Engine: LS3 V8 (Supercharged)
Horsepower: 690
Main Sponsor: Tegiwa/Alloy Wheel Shop.com



93

JOSH KING



Team: Fifth Gear Transport
Car: BMW E36
Engine: M50B26
Horsepower: 720
Main Sponsor: Fifth Gear Transport

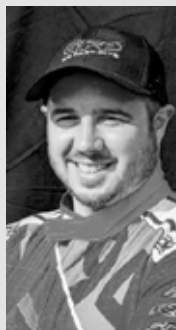


DRIFT PRO CHAMPIONSHIP | motor sport UK
HYPER PADDOCK

To get the ultimate Drift experience, see the cars and meet the stars, head over to the showcase Hyper Paddock.

www.driftpro.co.uk

94 PAUL CUNNINGTON



Team: Octane
Car: Nissan Silvia S15 2000
Engine: 2JZ b (Turbo)
Horsepower: 700
Main Sponsor: Octane



112 NATHAN CHIVERS



Team: Liqui Moly
Car: Nissan S15
Engine: TBC
Horsepower: TBC
Main Sponsor: Liqui Moly



265 AXEL HILDEBRAND



Team: Team Sonax Car Care
Car: Nissan Silvia S14
Engine: RB25 (Turbo)
Horsepower: 700
Main Sponsor: Sonex Car Care



366 MICHAEL BENNETT



Team: Sandhaven Motorsport
Car: BMW E46
Engine: 2JZ
Horsepower: TBC
Main Sponsor: BM Zone, PH Drift, The Car Buying Factory



128 LWI EDWARDS



Team: Bilstein
Car: BMW E36
Engine: LS427 (Supercharged)
Horsepower: 803
Main Sponsor: Bilstein



147 RICHIE GIBLEY



Team: Richie Gibley Motorsport
Car: Nissan S13 180SX
Engine: 1JZ
Horsepower: TBC
Main Sponsor: Auto Extreme, Wossner UK



420 HARRY LOVE



Team: HL_Drifting
Car: Nissan S14a
Engine: 1JZ
Horsepower: TBC
Main Sponsor: TBC



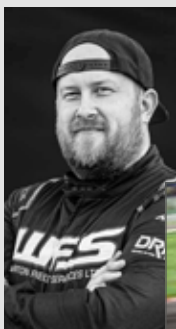
DRIFT PRO CHAMPIONSHIP | motor sport UK

HYPER PADDOCK

To get the ultimate Drift experience, see the cars and meet the stars, head over to the showcase Hyper Paddock.

www.driftpro.co.uk

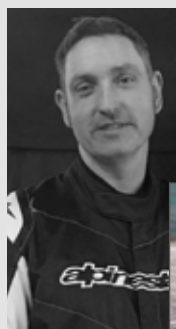
157 GEORGE BARCLAY



Team: WFS Motorsport
Car: BMW 2 Series
Engine: 2JZ
Horsepower: 1000
Main Sponsor: WFS Motorsport



206 MATTHEW ROBERTS



Team: Matt Roberts Drifting
Car: BMW E36
Engine: TBC
Horsepower: TBC
Main Sponsor: TBC



DRIFT PRO BATTLE UPDATES

Keeping track of every run, session, and battle has never been easier thanks to the Battle Updates available via the Drift Pro Championship website www.driftpro.co.uk

Updated in real-time, Battle Updates keep you informed on how your favourite team or driver is progressing through the competition. When viewing the Battle Updates, you will have on-screen information relating to the drivers on track at that time with additional spotters' information available should you want to find out more about any of the drivers.



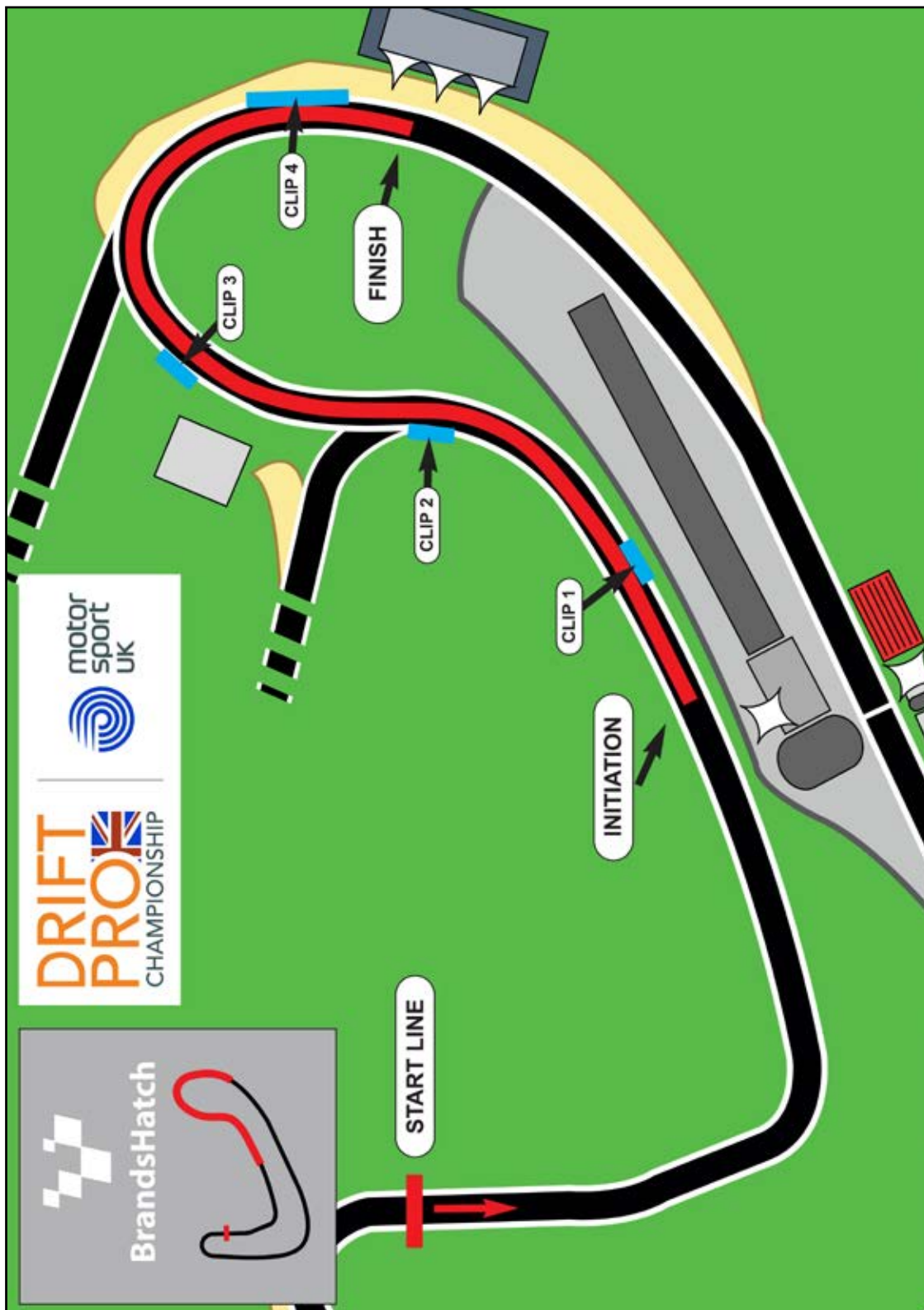
@DriftProChampionship



@DriftProChampionship
#DriftProChampionship



search 'MSUK Drift Pro Championship'



Get it ON[®]

CLOTHING CO.

AUTOMOTIVE & CUSTOM PRINTED APPAREL

**VISIT OUR STAND
IN THE TRADE AREA
OR BUY ONLINE:
WWW.GETITONCLOTHING.CO.UK**



OUR BRANDS

DROP A GEAR **LOW LIVES** **ONLY JDM** *RESPECT Your Elders*



CATCH A RIDE IN A DRIFT TAXI

Take the Taxi ride of a lifetime! Buckle up and get ready to experience some serious sideways action.

Go Japan! has teamed up with PHDrift, the most advanced Drift Academy in the UK, to bring you the most exciting taxi ride you're ever likely to take and an opportunity to immerse yourself in the complete Drift experience.

To book a seat, head over to the Drift Pro Hyper Paddock - located in the outer paddock - and buy a ticket! £25.00 per-ride, per-person.

The rides start at 10.00am and finish at 4.30pm and take place in the lower paddock area.

Passengers must be 16 or over. A parent of Guardian must sign the indemnity for anyone under 18.



PH-DRIFT

PHDrift - The Science of Drift Academy

The most advanced Drift academy in the UK offers personal coaching for drivers of all levels: from complete beginners to experienced competitors, on a private track located at Teesside Autodrome.

Coaching is individually tailored to suit, with courses catering for pupils from nine years old, each designed to build confidence and develop car control skills, quickly and effectively.

Head coach Yogi is a passionate and experienced tutor, ensuring pupils get the best coaching available, whilst at the same time discover the history and culture behind the sport.

Drifting isn't just driving; it's a culture and lifestyle to be enjoyed!



High quality, dual-ceramic ball bearing turbo systems built to fine tolerances. Fully-balanced and ready to fit.



VISIT OUR STAND AT THE SHOW



sales@pulsarturbos.com

01252 790636



THE championship for drivers who race Hondas.

The brand-new Racing Hondas Championship hit the track for the first time this year during the early May Bank Holiday weekend at Cadwell Park, where the first three rounds were held. A further three were held at Brands Hatch in June, followed by two at Oulton Park in July and the most recent two at Donington Park in August.

Created by the innovative and forward-thinking Time Attack Organisation and supported by industry leading Japanese parts supplier Tegiwa Imports, the Racing Hondas Championship is designed to provide an exciting and competitive environment for drivers and teams who want to race Hondas at top-level UK circuits, in front of thousands of motorsport enthusiasts and Honda fans.

Confirmed as a fixture at all Time Attack events and shows in 2023, Racing Hondas is a fully sanctioned Motorsport UK championship that will be held over six race weekends and eight race days.



All cars must have been manufactured by Honda and be powered by a Honda VTEC engine. The classes have been designed to appeal to owners of all Honda models, each following a series of carefully considered technical regulations that will ensure fair and close competition:

- **Class A:** for cars with unlimited modifications - running on slicks and semi-slicks
- **Class B:** for cars with unlimited modifications - running on semi-slicks with no forced induction.
- **Class C:** for cars with a power-to-weight ratio of up to 195bhp/ton - running on semi-slicks
- **Class D:** for cars with a power-to-weight ratio of up to 176 bhp/ton - running on semi-slicks

So, if you own a Honda with a VTEC engine and would like to race in a competitive, professionally managed championship in front of 1000s of spectators that represents great value for money, **the Racing Hondas Championship is THE place to be.**

ENTRY LIST

No	Driver	Team	Car
CLASS B			
24	James Allen	Garage 24 Motorsport	Civic EP3
31	Will Murfin	Murfin Motorsport	Civic EK
63	Phil Wright	Phil Wright Racing	Civic EP3
82	Luke Harvey	—	Civic EK
CLASS C			
8	Mark Lemmer	Barwell Motorsport	Civic EP3
20	James Kaye	Lucas Oil Products	Civic EP3
32	Mervyn Beckett	MJ Auto Styling	Civic EP3
46	Nick Charlier	Click Waste Racing	Civic EP3
CLASS D			
7	Spencer Fortag	4Tag Racing	Civic FN2
99	Andy Barnes	Kent Models	Civic FN2
177	Ed Sibbald	MJ Motorsport	Civic EP3

CHAMPIONSHIP STANDINGS

No	Driver	Pts
CLASS B		
1	Phil Wright	144
2	Will Murfin	118
3	Scott Smith	33
4	Ben Griffiths	5
CLASS C		
1	Nick Charlier	80
2	Mervyn Beckett	68
3	Ryan Cunningham	65
4	Ben Mills	52
5	Ben Sharpe	37
6	Kevin Theaker	27
7	Stephen Langton	26
8	Rhys Lewis	24
9	Simon Welch	20
10	Vic Hope	13
11	Kevin O'Connor	9
12	Paul Huxley	6
13	Jay Hadley	1
CLASS D		
1	David Lawrence	169
2	Andy Barnes	96
3	Spencer Fortag	91
4	Luke Sedzikowski	35
5	Mat Stenning	28
6	Ed Sibbald	18
7	Jon Peerless	16



2023 CALENDAR

Rounds 1/2/3	30 April/1 May – Cadwell Park
Rounds 4/5/6	10/11 June – Brands Hatch Indy
Rounds 7/8	22 July – Oulton Park Island
Rounds 9/10	20 August – Donington Park National
Rounds 11/12	24 September – Brands Hatch Indy
Rounds 13/14	22 October – Snetterton 200

Introducing the Racing Hondas Paddock Club

If you're a Honda owner or enthusiast, then get closer to the marque and the most innovative motorsport programme for all VTEC-powered models by joining the soon to be launched Racing Hondas Paddock Club.

Details of membership and an application will be published on the soon to be launched new championship website: www.racinghondas.uk

Visit the website and keep an any eye on the Racing Hondas Championship social media channels for news and updates.

www.racinghondas.uk

Former BTCC drivers compete in

RACING HONDAS
CHAMPIONSHIP
TEQUILA



Joining the Racing Hondas Championship grid for this weekend's rounds 11 and 12 at Brands Hatch are two drivers who are no strangers to door-to-door saloon car racing: former British Touring Car competitors James Kaye and Mark Lemmer.

Each will drive an identical specification Honda Civic Type-R EP3 running in the highly competitive Class C category for cars with a power-to-weight ratio of 195bhp per-ton.

Both drivers are still very much involved in motorsport, with Kaye competing in this year's British GT Championship driving a GT4 Specification BMW Z3, whereas Lemmer manages the highly successful Barwell Motorsport team that has recorded a string of championship titles and multiple race wins, most recently in GT racing.

Having competed against each other on a number of previous occasions, Kaye and Lemmer have often been teammates, either in separate cars or sharing the wheel the same car in endurance races. Consequently, they have known each other for many years, a factor that may well spark a friendly rivalry.

Much of Kaye's BTCC career was spent driving Hondas, initially with Barwell Motorsport and then Synchro Motorsport, who represented the Japanese manufacturer's official entry for four seasons. Kaye's successes include winning the BTCC Production Class Championship twice, together with the Privateers and Independents' Championships – three of the titles gained driving a Civic Type-R EP3. Kaye is therefore looking forward to getting back behind the wheel of an EP3 this weekend:

"It's going to be just like old times. Driving a Civic and competing against Mark, who was both one of my closest rivals and former teammate. Thanks goes to Lucas Oils who have helped put me on the grid for this event.

"I've been watching the progress of the Racing Hondas Championship since the Time Attack organisation launched it earlier this year. Clearly, it has great potential and I can see it growing into a fantastic package for teams and drivers. In fact, if I enjoy it as much as I think I will this weekend, I'll seriously consider a full season in 2024."

After winning a number of one-make series' in the '90s, before going in to compete in the BTCC in the early 2000, Lemmer has managed Barwell Motorsport for nearly two decades. Having made an occasional guest appearance behind the wheel since then, he is relishing the opportunity to swap the management for driving:

"It's going to be great to be on the track this weekend rather than stood on the side-lines.

"I started my racing career in one-make saloon car championships, so to go back to that environment this weekend is an opportunity I didn't want to miss. I'm really looking forward to it and hope this will be my first outing of many in the Racing Hondas Championship."

Another former BTCC driver Simon Graves will be joining us this weekend, driving an Escort Mk1 in the Time Attack Classic & Retro Pro Class.

Sunday's Racing Honda Championship Races are scheduled to start at 14.50 and 16.45.

GFB

GO FAST BITS

PERFORMANCE
WITHOUT
COMPROMISE

**DIVERTER VALVES / BLOW OFF VALVES
BOOST CONTROLLERS FUEL PRESSURE REGULATORS
SHORT SHIFT KITS EXTERNAL WASTEGATES
GAUGE PORTS / MANIFOLD BOOST TAPS
LIGHTWEIGHT PULLEY KITS**





SHOW AND SHINE

SUPPORTED BY SONAX CAR CARE

The organisers of Go Japan! are excited to bring you a spectacular Show and Shine competition for Japanese cars only, supported by market leading car care product manufacturer SONAX, the German-based brand also sponsoring the Motorsport UK Drift Pro Championship.

Founded in 1903, SONAX has become one of the world's leading developers and producers of automotive care products, with the brand now represented in over 120 countries. In recent times, SONAX has become associated with a variety of motorsport programmes and is now embedded into the DNA of the classic car and tuning scenes.

Taking its portfolio of activities into account and looking to extend its presence in the UK aftermarket trade and retail sectors, SONAX has chosen to support this year's Motorsport UK Drift Pro Championship and the extremely popular Show and Shine competition at each of the Time Attack Organisation's six spectacular shows that take place alongside the on-track action.



HOW THE JUDGING WORKS...

A panel of judges will assess each car by following a pre-determined criteria. Having done so, they will collectively decide on the winners in each category and the overall car of the show.

This year sees us mix things up with two new categories: Concierge, for high-quality examples and regular award-winners and Show, for cars that are new to the show and shine scene and may not have the lavishness of the concierge contenders bestowed upon them.

Trophies will be awarded as follows:

- Car of the Show
- Concierge Class - Winner
- Concierge Class – 2nd
- Concierge Class – 3rd
- Show Class - Winner
- Show Class – 2nd
- Show Class – 3rd

Judging is carried out using a fair and transparent method of assessing and choosing the prize winners, with no bias towards a particular brand with no favouritism or hidden agenda.

The winner in each category will also win a prize of fantastic SONAX Car Care products.

WE WISH ALL OF TODAY'S 70 (YES, 70!) ENTRANTS GOOD LUCK - AND MAY THE BEST CARS WIN!

Awards Presentation: 15.45

INSTAGRAM CORNER



Making its Go Japan! debut this year is a brand-new feature for our shows: Instagram Corner. This specially allocated area that runs alongside the SONAX Show and Shine competition features some of the most prolific influencers and bloggers that post about their fantastic looking cars on Instagram.

We are delighted to welcome some of the top 'Instagrammers' from the region and beyond who are appearing here today:

Paul Craymer	Honda Civic Type R FK8	@pc68_fk8
Rhian Ayres	Honda Civic Type R FK8	@fk08_pnk
Edgaras Tamulis	Nissan Silvia S14	@sp33dfr3aks
Alex Topko	Toyota Celica Supra	@alexthegrumpyone
Peter Andrews	Nissan GT-R R33	@D7_GTR
Andy Smith	Toyota Celica ZZT	@big_ab5
Ryan Chadwick	Subaru Impreza STI	@ryanchadwick6
Kye Bliss	Nissan Skyline GT-R R34	@r34_bliss
Terri Fordham	Nissan Juke	@teri_juicedjuke

We invite you to take a look around their cars meet the people behind them, take photos and get involved by sharing and posting on Instagram. Don't forget to include the tag: @GoJapan



CAR CLUBS & INDIVIDUAL EXHIBITS

We are delighted and somewhat overwhelmed with the number of car clubs and their members joining us at Brands Hatch today. With 86 clubs comprising nearly 1200 cars, it's a figure that makes this year's show the biggest edition of Go Japan! we've ever organized.

Also adding to the line-up is an eclectic mix of individual exhibits, displayed by owners who are not associated to a club but have cars that are worthy of public display. We are delighted to welcome over 160 cars in this section of the show alone.

If you are one of the many who has taken the trouble to prepare your car and bring it here today, we thank you for doing so and hope you have a great time with us.

During the day, the clubs will be judged for four awards:

- Biggest Club Stand
- Best Presented Stand
- Best Presented Cars
- Best Collective (mix of models)

Awards Presentation: 15.45 (in the Show & Shine area)

The car clubs exhibiting today are:

JDM vs The World
Manic 5s
MCM
S2KUK - UK S2000 Owners Club
ST170owners.com
Void Society
300zx Owners Club
350Z-uk.com
B Road Bashers
B-Road Blasters
Baka Itasha
CULT86
Cult86
CustomUK
Delsoluk
Dokyun Dreamers
East Coast Honda
East Coast Japanese
Essex Honda
Essex Scooby Crew
Evolution
FK-crew-SW
Flash Cars UK
GEOBYLUKE
Granny Shifters
GTTuners
GT86 / BRZ Drivers Club
GTFOUR OWNERS

Hampshire jap cars
Ikioi Team
Japworx
JDM Dragons
JDM vs The World
JOOH -Jap Owners Of
Hampshire
Just Jap
Just Modified
Kaido Kita
Kent Modified Cars
KX5 Collective
Lude Generation
Mazda Mittsu Cruisers
Mazda MPS oc
Micra Mafia
Midnight Ghosts
Midnight Rivals
Mod Warriors
modern-classic.uk
Modified Empire
Modified Girls
Modified Jukes UK
MODSRUS
MSBCC
Mx5ers
Nine Six World
Nissan 300zx Owners Club
Nobility Toyota Crown Owners
UK

Nobility Toyota Crown
Owners UK
NoGang
NSX Club
Osoi nights
Pistontech
Pistontech car club
Ragit
RSTANCE XTIV
RX-8 Owners Club
SENTAI
South East Imprezas
SplodgeMotors
Street Dreams
Sussex Evo Owners
Sussex Scooby Owners
SXOC
SXOC
The 7-89 Automotive
The Down & Out Club
The Japyard
The Outcast Crew
Toyota Altezza RS200 Owners
Club
Toyota GR Yaris Modified
Club
Toyota IQ UK
Type R South East Owners
Club
Type R SouthEast Owners
Club
UK Starlet Owners
UKei
Yaris Club UK
Yuugen_cc



CUSTOM REMAPS AND PERFORMANCE UPGRADES

VISIT OUR STAND IN THE TRADE AREA AND GET YOUR CAR REMAPPED TODAY!

www.mmtperformance.co.uk

0115 678 0707





OEM heritage // AFTERMARKET excellence // RACING pedigree



Available from:

Tegiwa Imports
www.tegiwaimports.com



Roger Clark Motorsport
www.rogerclarkmotorsport.co.uk



www.exedy.co.uk



TRADE STANDS

We are delighted to welcome an extensive line-up of businesses, brands and products to our trade area located in the heart of the show.

We encourage you to take time to browse around, meet the experts and don't miss the opportunity to snap up a bargain with one of the following exhibitors:

- | | |
|-----------------------|----------------------|
| BC Racing | Maids of England |
| Car Finesse Fragrance | Mini Legend Ltd |
| Deadly Brand Clothing | MMT Performance |
| Delux Plates | Motegi Wheels |
| EP Performance | NOIR |
| Flagship Clothing | Octaneologists |
| Form 7 Performance | Photography UK |
| Fresh Official | Pulsar Turbos |
| Get it on Clothing | Revival Graphics |
| Greenlight Insurance | SONAX |
| Hugos Plates | Summertime Shiba |
| Jap Performance | Tegiwa |
| JBM.UK | The Performance Shop |
| JDM diecast | Limited |
| Kitsu's Creations | Tofu Cute |
| Kode Performance Ltd | Toxic Vinyls |
| Lucas Oils | Unicorn |
| M.R. | Violent-d |
| Mad Hatters | |



Keep up to date with the action on our Facebook page @GoJapanEvent

CONDITIONS OF ADMISSION

Motor Racing is dangerous and persons attending the meeting do so entirely at their own risk. It is a condition of admission that all persons having any connection with the promotion and/or organisation and/or conduct of the meeting, including the owners of the land and the vehicles, are absolved from all liability arising out of accidents, howsoever caused, resulting in damage and/or personal injury to spectators, pass and ticket holders, or to their goods and vehicles.

PROGRAMME & COPYRIGHT

The promoters reserve the right to amend or cancel the meeting without notice or refund. All literary matter in this programme, including the list of competitors and their racing numbers, is copyright and any person found making illegal use thereof will be prosecuted. Although every effort is made to avoid inaccuracies in the descriptions of competing cars, the Club accepts no responsibility for any errors that may occur. It is a condition of admission to these premises that photography, cine-film, video, sound or any other visual or audio use, including making copies of the recording or reproduction, causing or permitting it to be seen or heard in public, broadcasting, diffusing, selling, renting, exchanging, lending, using for gain, or otherwise dealing with it in whole or in part is strictly forbidden. Use of privately owned camcorders for private viewing purposes only is not permitted by the circuit owners without prior permission. Furthermore, the Promoters reserve the right to confiscate and retain possession of any photographs or films made in breach of this condition and without its express consent in writing.

SPECTATOR NOTICES

Please do not leave litter about the grounds - take it with you. Remember to drive with care and caution when leaving the grounds. To safeguard both competitors and public **ANIMALS ARE NOT ADMITTED**. This is most important.

PROHIBITED AREA NOTICES

The public are not admitted to the areas where these notices are displayed. The fences are there for protection and any person caught trespassing or wilfully damaging trees, fences etc., will be prosecuted by the Promoters.

ENQUIRY OFFICE

All enquiries relating to property lost or found, children lost or found wandering, theft from cars or other signs of tampering, emergency messages for spectators and any other serious problems relating to persons or property, should be directed to the Circuit Office.



Despite the organisers taking all reasonable precautions, unavoidable accidents can happen. In respect of these you are present at your own risk.

FLAG SIGNALS

BLUE (STEADY)

Another competitor is close.

BLUE (WAVED)

Another competitor is trying to pass.

WHITE

Service vehicle or very slow car on circuit.

YELLOW (STEADY)

Danger ahead; no overtaking, slow down, be prepared to stop.

YELLOW (WAVED)

Great danger ahead; no overtaking, slow down, be prepared to stop.

YELLOW/RED STRIPES

Slippery surface ahead.

GREEN

Proceed, hazard indicated has been cleared.

RED

STOP RACING, proceed slowly to pits or startline as instructed by marshals (at startline & individual marshal's posts). Race stopped.

BLACK/ORANGE DISK

Warning of mechanical failure which might not be obvious to driver; call into pits immediately.

BLACK/WHITE DIAGONAL

Warning to driver that his/her behaviour (e.g. corner cutting) is suspect and he/her may be black flagged.

BLACK

Driver must call in immediately and report to the Clerk of the Course.

BLACK & WHITE CHEQUERED

End of the race.

BrandsHatch

TEGIWA

PERFORMANCE PARTS DISTRIBUTION WAREHOUSE FOR JAPANESE & EUROPEAN CARS

WE ARE OFFICIAL SPONSORS OF *TIME ATTACK*



**NEXT DAY
DELIVERY TO
UK/EUROPE**



**OVER 200
BRANDS
LISTED**



**EURO PARTS
AVAILABLE AT
TEGIWA EURO**



**PHONE/EMAIL
SUPPORT**

FIND US ON SOCIAL MEDIA FOR EXCLUSIVE CONTENT & OFFERS



[FACEBOOK.COM/TEGIWA](https://www.facebook.com/TEGIWA)
[FACEBOOK.COM/TEGIWAEURO](https://www.facebook.com/TEGIWAEURO)



[@TEGIWA](https://www.instagram.com/TEGIWA)
[@TEGIWAEURO](https://www.instagram.com/TEGIWAEURO)



[YOUTUBE.COM/TEGIWA](https://www.youtube.com/TEGIWA)



[TEGIWAIMPORTS.COM/BLOG](https://www.tegiwainports.com/blog)

TEGIWA.COM • +44 (0)1782 334440 • WEBSALES@TEGIWAIMPORTS.COM

TEGIWA IMPORTS, TEGIWA HOUSE, SUTHERLAND ROAD
STOKE-ON-TRENT, ST3 1HZ, ENGLAND



MR145 TRAKLITE 3.0
15.60LBS / 15X8.0
18.25LBS / 17X8.5
19.25LBS / 18X8.5

TRAKLITE



THIS IS NO TIME TO QUESTION YOUR WHEELS.

Blasting out of a corner at 100+ MPH is no time to second-guess your wheels. You're made for the white-knuckled grip and deafening roar of the climbing RPMs, so you need a wheel you can trust. Motegi's FFI (Flow Formed Technology) wheels offer the strength and lightweight construction of a forged wheel at the price of a cast wheel with exceptional style to match. From the apex to the straightaway, we take out the guesswork, so you can put in the work. Choose Motegi for flat-out performance that floors the competition. Check out all of our flow formed wheels at: motegiracing.com / [@motegiracing](https://www.instagram.com/motegiracing)